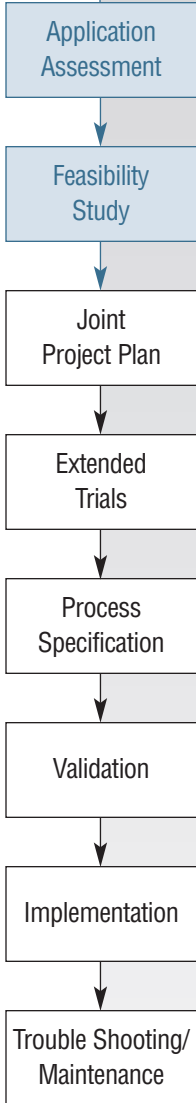




CLEARWELD®



ADAPTING LASER WELDING TO YOUR IDEAS



Getting Started

Application Assessment

Before performing a feasibility study, an initial review takes place to clarify customer objectives, part/joint design and material compatibility assessment. Although this seems basic, we see this as an important step in moving the program forward as efficiently as possible. Once objectives are understood and deemed acceptable, parts will be utilized for feasibility experiments.

Feasibility Trials

Gentex offers a free feasibility trial for customers interested in using the Clearweld process. All feasibility trials consist of one or more of the following services:

- Test plastic for compatibility with the Clearweld process
- Evaluate joint design of customer provided part
- Evaluate part for use with coating or weldable resin
- Dispense Clearweld coating on customer supplied part (if necessary and does not require excessive programming time)
- Weld a limited number of customer supplied parts. If a part requires excessive time or custom fixturing, a coupon or representative sample part will be welded
- Analyze trial results to determine if the objectives, as defined by the customer, have been met. Minimal, rudimentary strength tests may be performed on parts in order to evaluate the weld strength
- Evaluate production requirements for the application

The following are outputs of a feasibility trial:

- Feasibility trial report
- Samples
- Recommendations for
 - Joint design
 - Fixturing
 - Coating vs. weldable resin
 - Coating application methods
 - Laser options
 - Alternative plastics, if necessary
- Options for proceeding via Stage-Gate process

Next Steps

Upon completion of an application assessment and feasibility trial, the next step is to jointly develop a project plan specific to your application.

A technology solution by
GENTEX®

USA P.O. Box 315, Carbondale, Pa 18407 • P: 800.635.1463 • F: 570.282.8555 • E: clearweld@gentexcorp.com

UK Room 103, Building 26, Granta Park, Great Abington, Cambridge, CB21 6AL, United Kingdom • P: +44 1223 893566 • F: +44 1223 893666 • E: ClearweldEU@gentexcorp.com

GERMANY P.O. Box 1239, D-64819, Groß-Umstadt, Germany • P: +49 (0) 6078/938087 • F: +49 (0) 6078/7589263 • E: ClearweldEU@gentexcorp.com

www.clearweld.com • www.clearweld.co.uk • www.clearweld.de • www.clearweld.jp

© 2007 Clearweld is a registered trademark of TWI Ltd. The (oval) logo is a registered trademark of GENTEX Corporation. Patented.